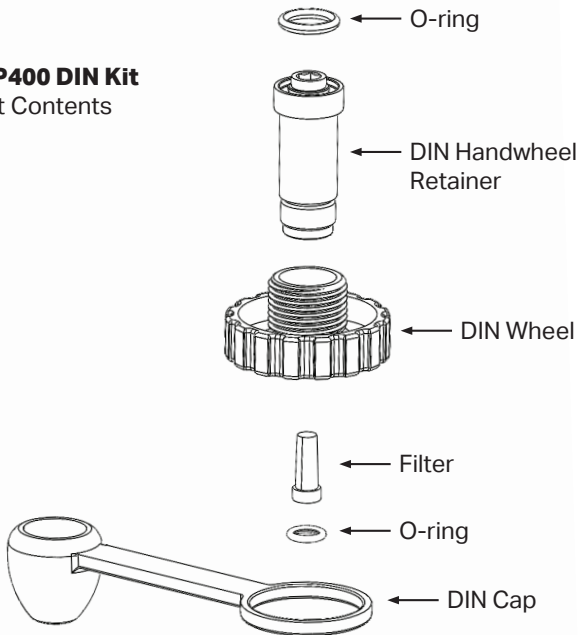




Brawn DIN Connector Kit p/n RP400

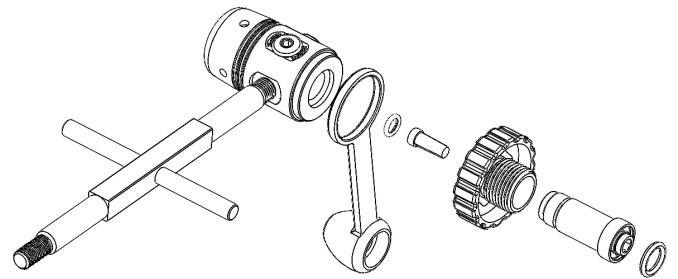
Authorized Installation Procedures

RP400 DIN Kit Kit Contents



Installation of DIN Connector

1. Holding the DIN handwheel retainer upside down, slide on the DIN handwheel with the threads facing downward.
2. Add the dust cap with the cup side facing downward
3. Insert the filter, narrow end first into the bottom of the DIN handwheel retainer followed by a non-lubricated o-ring (p/n RP400-19).



4. While continuing to hold the DIN handwheel retainer upside down, thread the main body on to the DIN handwheel retainer until hand tight. This inverted procedure prevents the filter and o-ring from falling out the bottom. Flip it back over.
5. Using a torque wrench with a 6 mm hex key, tighten the DIN handwheel retainer to 15 lbs.ft (20.5 Nm).
6. Install the non-lubricated face o-ring (p/n RP400-21), into the groove on top.

Check Your Work

1. Install first stage into a DIN cylinder valve. Slowly pressurize it. Immerse the first stage, with its newly installed connector, into a tub of water to check for leaks.

NOTE: Brawn DIN Kits prior to 2023 were slightly different. They had a two-piece handwheel retainer sealed with an o-ring. Instructions for this older model may be found at xsscuba.com

Removal of Yoke Assembly

1. Install vise mounting tool (p/n TL122) into one of the accessory ports.
2. Secure the tool into a bench vise with the first stage positioned vertically with the yoke facing up.
3. Remove the yoke screw.
4. Using a large 18" adjustable crescent wrench, apply firm, steady force to the inlet fitting in a counter-clockwise fashion to loosen it. Remove the inlet fitting and the yoke from the regulator body.
5. Lift the dust cap and cosmetic ring off the regulator body.

