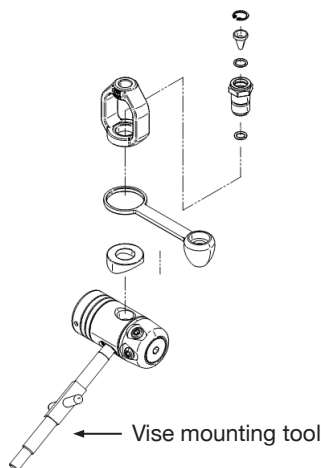


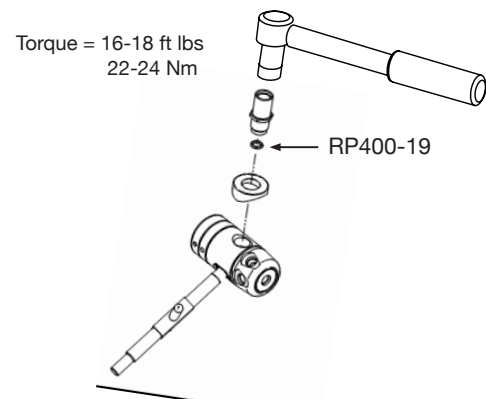
Removal of Yoke Assembly

1. Install vise mounting tool TL122 into one of the accessory ports.
2. Secure the tool into a bench vise with the first stage positioned horizontally with the yoke facing up.
3. Remove the yoke screw
4. Using a large 18" adjustable crescent wrench, apply firm, steady force to the inlet fitting in a counter-clockwise fashion to loosen it. Remove the inlet fitting and the yoke from the regulator body.
5. Lift the dust cap and saddle off the regulator body.

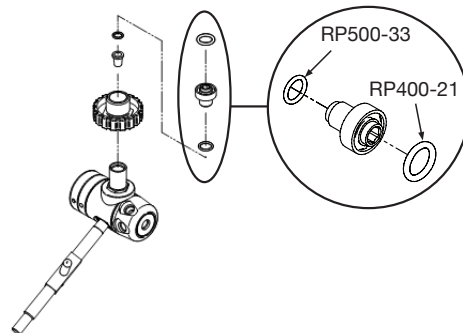


Installation of DIN Connector

1. Disassemble the handwheel retainer from the DIN housing and separate the parts.
2. Place the saddle over the main body DIN retainer port.
3. Thread the DIN housing clockwise with lightly lubricated o-ring RP400-19 into the main body. Using a 3/16" deep socket or a crow's foot, apply a torque of 16 – 18 ft lbs / 22-24 Nm.
4. Install the dust cap over the din housing



5. Install the handwheel with the threads facing outwards over the DIN housing
6. Install the DIN Filter with nonlubricated o-ring RP500-34 into DIN Housing.
7. Thread on the handwheel retainer, clockwise, with its lightly lubricated o-ring RP500-33 on the back and its non-lubricated face o-ring RP400-21, to the front
8. Using a torque wrench with a 6 mm hex key, tighten the handwheel retainer to 80 – 100 in lbs / 9-11 Nm



Check your work

1. Install first stage into a din cylinder valve. Slowly pressurize it. Immerse the first stage, with its newly installed connector, into a tub of water to check for leaks.