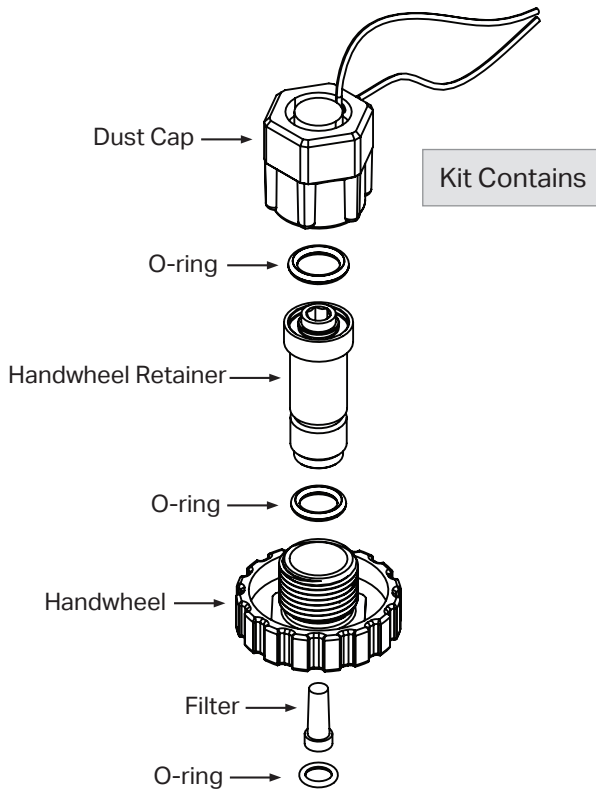
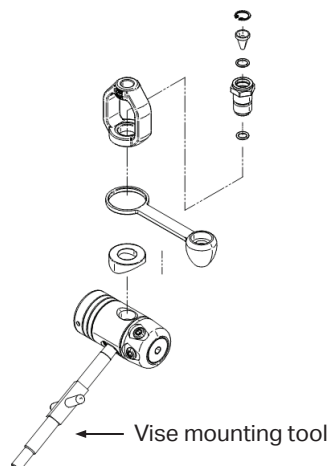


**NOTE:** This DIN Connector Kit is for use on the 2nd generation Inspire 1st stage (2022-current)



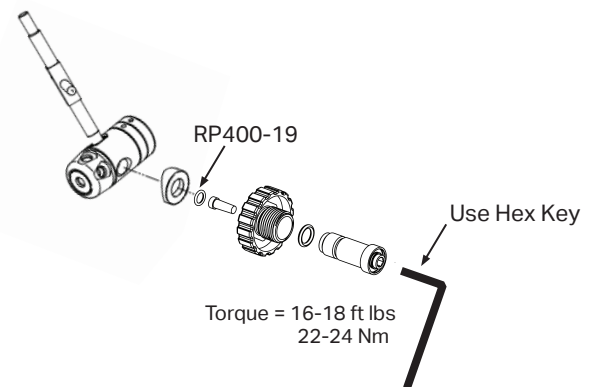
### Removal of Yoke Assembly

1. Install vise mounting tool TL122 into one of the accessory ports.
2. Secure the tool into a bench vise with the first stage positioned horizontally with the yoke facing up.
3. Remove the yoke screw
4. Using a large 18" adjustable crescent wrench, apply firm, steady force to the inlet fitting in a counter-clockwise fashion to loosen it. Remove the inlet fitting and the yoke from the regulator body.
5. Lift the dust cap and saddle off the regulator body.



### Installation of DIN Connector

1. Holding the DIN handwheel retainer upside down, slide on the DIN handwheel with the threads facing downward.
2. Insert the filter, narrow end first into the bottom of the DIN handwheel retainer followed by the non-lubricated o-ring (p/n RP400-19).



3. While continuing to hold the DIN handwheel retainer upside down, thread the main body on to the DIN handwheel retainer until hand tight. This inverted procedure prevents the filter and o-ring from falling out the bottom. Flip it back over.
4. Using a torque wrench with a 6 mm hex key, tighten the DIN handwheel retainer to 15 lbs.ft (20.5 Nm).
5. Install the non-lubricated face o-ring (p/n RP400-21), into the groove on top.

### Check your work

1. Install first stage into a DIN cylinder valve. Slowly pressurize it. Immerse the first stage, with its newly installed connector, into a tub of water to check for leaks.